

spazio

**PALLET
DEALS**

For a limited time only

**Great
Value**

**Natural
Designs**

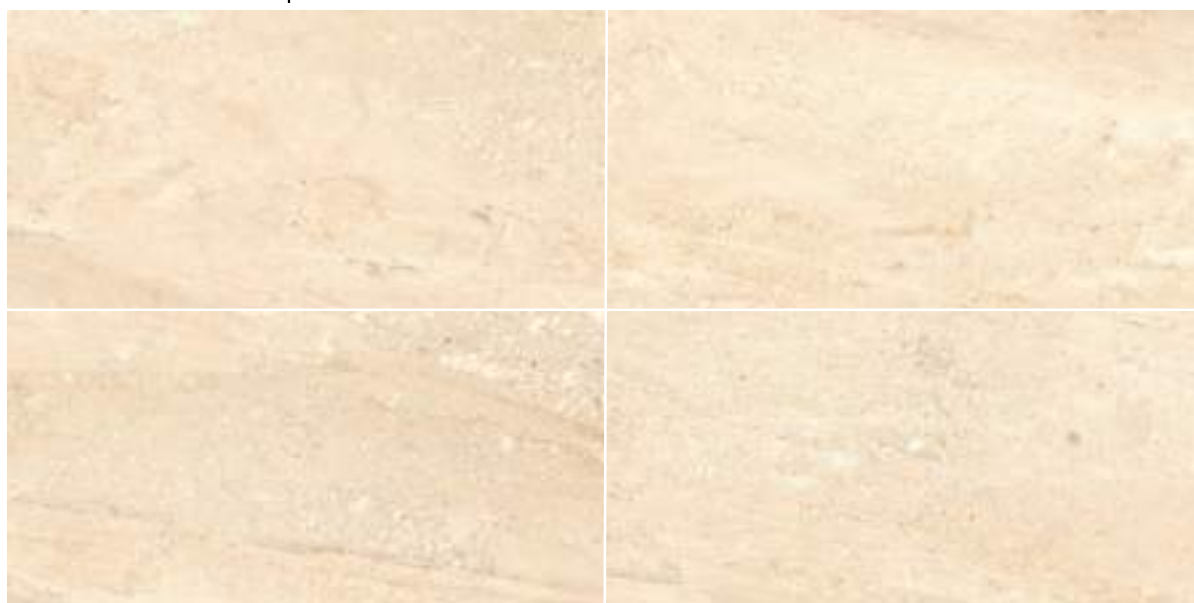
30x60cm
Glazed Porcelain Tiles
Made in Malaysia



SPAZIO ARIANA
in the Bathroom



Tiles are in multiple faces:



PRODUCT INFORMATION

Product Name	: Ariana
Product Code	: SMARA1
Colour	: Sand
Surface Finish	: Matt
Shade Variation	: V3
Size	: 30x60cm
Thickness	: 8.7mm
Pieces Per Carton	: 8 pieces
Cartons Per Pallet	: 40 cartons
Pallets Per 20'FCL	: 18 pallets
Average Weight Per Carton	: 27.76 kg
Average Weight Per Pallet	: 1.135 kg

* Products, colours and tile designs shown here are for illustration purposes.
Please refer to actual tiles for final selection.



Tiles are in multiple faces:



PRODUCT INFORMATION

Product Name	: Ariana
Product Code	: SMARA2
Colour	: Taupe
Surface Finish	: Matt
Shade Variation	: V3
Size	: 30x60cm
Thickness	: 8.7mm
Pieces Per Carton	: 8 pieces
Cartons Per Pallet	: 40 cartons
Pallets Per 20'FCL	: 18 pallets
Average Weight Per Carton	: 27.76 kg
Average Weight Per Pallet	: 1.135 kg

* Products, colours and tile designs shown here are for illustration purposes.
Please refer to actual tiles for final selection.



Tiles are in multiple faces:



PRODUCT INFORMATION

Product Name	: Ariana
Product Code	: SMARA3
Colour	: Brown
Surface Finish	: Matt
Shade Variation	: V3
Size	: 30x60cm
Thickness	: 8.7mm
Pieces Per Carton	: 8 pieces
Cartons Per Pallet	: 40 cartons
Pallets Per 20'FCL	: 18 pallets
Average Weight Per Carton	: 27.76 kg
Average Weight Per Pallet	: 1.135 kg

* Products, colours and tile designs shown here are for illustration purposes.
Please refer to actual tiles for final selection.

SPAZIO BRUNA
in the Living Room





Tiles are in multiple faces:



PRODUCT INFORMATION

Product Name	: Bruna
Product Code	: SMBRU1
Colour	: White
Surface Finish	: Matt
Shade Variation	: V3
Size	: 30x60cm
Thickness	: 8.7mm
Pieces Per Carton	: 8 pieces
Cartons Per Pallet	: 40 cartons
Pallets Per 20'FCL	: 18 pallets
Average Weight Per Carton	: 27.76 kg
Average Weight Per Pallet	: 1.135 kg

* Products, colours and tile designs shown here are for illustration purposes.
Please refer to actual tiles for final selection.



Tiles are in multiple faces:



PRODUCT INFORMATION

Product Name	: Bruna
Product Code	: SMBRU2
Colour	: Bone
Surface Finish	: Matt
Shade Variation	: V3
Size	: 30x60cm
Thickness	: 8.7mm
Pieces Per Carton	: 8 pieces
Cartons Per Pallet	: 40 cartons
Pallets Per 20'FCL	: 18 pallets
Average Weight Per Carton	: 27.76 kg
Average Weight Per Pallet	: 1.135 kg

* Products, colours and tile designs shown here are for illustration purposes.
Please refer to actual tiles for final selection.



Tiles are in multiple faces:



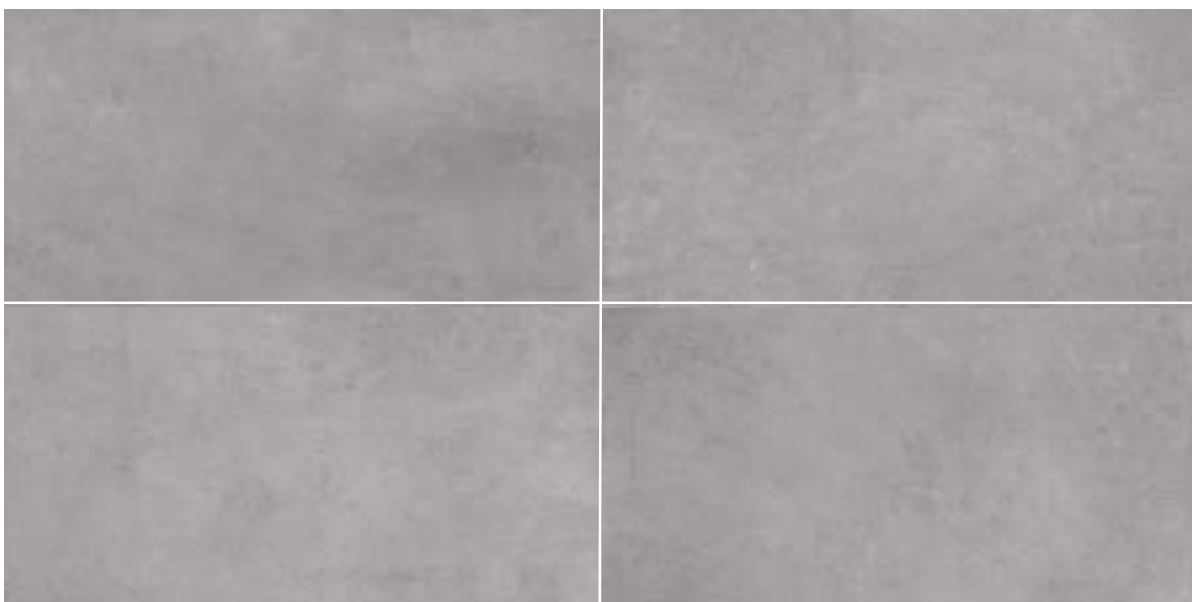
PRODUCT INFORMATION

Product Name	: Bruna
Product Code	: SMBRU3
Colour	: Brown
Surface Finish	: Matt
Shade Variation	: V3
Size	: 30x60cm
Thickness	: 8.7mm
Pieces Per Carton	: 8 pieces
Cartons Per Pallet	: 40 cartons
Pallets Per 20'FCL	: 18 pallets
Average Weight Per Carton	: 27.76 kg
Average Weight Per Pallet	: 1.135 kg

* Products, colours and tile designs shown here are for illustration purposes.
Please refer to actual tiles for final selection.



Tiles are in multiple faces:



PRODUCT INFORMATION

Product Name	: Bruna
Product Code	: SMBRU4
Colour	: Grey
Surface Finish	: Matt
Shade Variation	: V3
Size	: 30x60cm
Thickness	: 8.7mm
Pieces Per Carton	: 8 pieces
Cartons Per Pallet	: 40 cartons
Pallets Per 20'FCL	: 18 pallets
Average Weight Per Carton	: 27.76 kg
Average Weight Per Pallet	: 1.135 kg

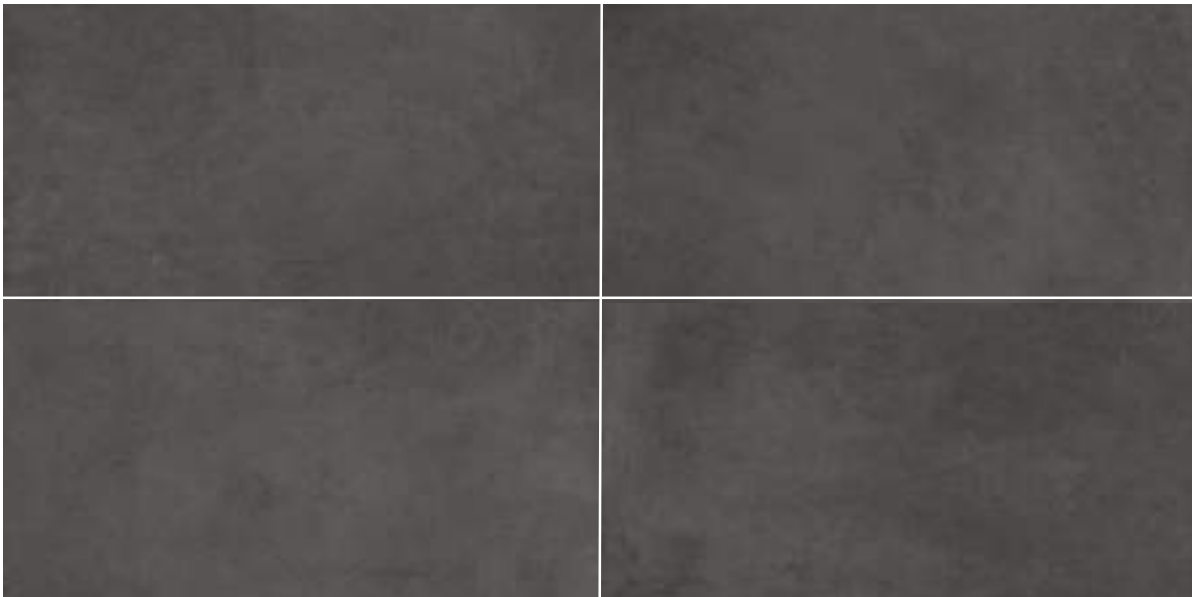
* Products, colours and tile designs shown here are for illustration purposes.
Please refer to actual tiles for final selection.



PRODUCT INFORMATION

Product Name	: Bruna
Product Code	: SMBRU5
Colour	: Dark Grey
Surface Finish	: Matt
Shade Variation	: V3
Size	: 30x60cm
Thickness	: 8.7mm
Pieces Per Carton	: 8 pieces
Cartons Per Pallet	: 40 cartons
Pallets Per 20'FCL	: 18 pallets
Average Weight Per Carton	: 27.76 kg
Average Weight Per Pallet	: 1.135 kg

Tiles are in multiple faces:



* Products, colours and tile designs shown here are for illustration purposes.
Please refer to actual tiles for final selection.

SPAZIO BURIANA
in the Bathroom





Tiles are in multiple faces:



PRODUCT INFORMATION

Product Name	: Buriana
Product Code	: SMBUR1
Colour	: Bone
Surface Finish	: Matt
Shade Variation	: V3
Size	: 30x60cm
Thickness	: 8.7mm
Pieces Per Carton	: 8 pieces
Cartons Per Pallet	: 40 cartons
Pallets Per 20'FCL	: 18 pallets
Average Weight Per Carton	: 27.76 kg
Average Weight Per Pallet	: 1.135 kg

* Products, colours and tile designs shown here are for illustration purposes.
Please refer to actual tiles for final selection.



Tiles are in multiple faces:



PRODUCT INFORMATION

Product Name	: Buriana
Product Code	: SMBUR2
Colour	: Brown
Surface Finish	: Matt
Shade Variation	: V3
Size	: 30x60cm
Thickness	: 8.7mm
Pieces Per Carton	: 8 pieces
Cartons Per Pallet	: 40 cartons
Pallets Per 20'FCL	: 18 pallets
Average Weight Per Carton	: 27.76 kg
Average Weight Per Pallet	: 1.135 kg

* Products, colours and tile designs shown here are for illustration purposes.
Please refer to actual tiles for final selection.



SPAZIO RONAN
in the Bathroom



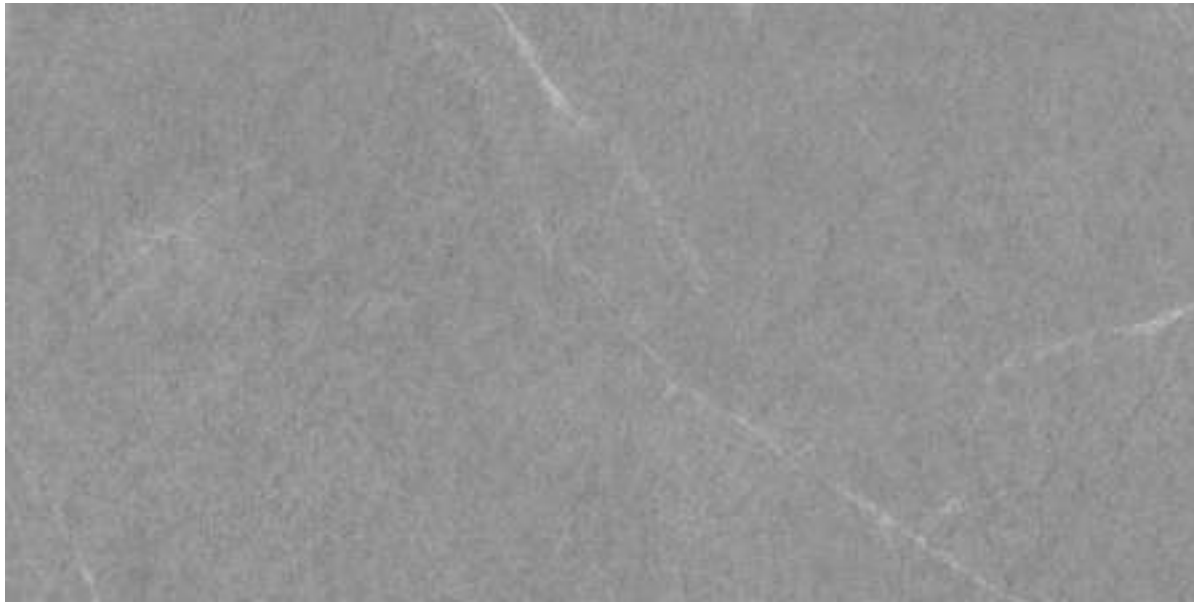
Tiles are in multiple faces:



PRODUCT INFORMATION

Product Name	: Ronan
Product Code	: RFRON1
Colour	: White
Surface Finish	: Rough / Anti-Slip
Shade Variation	: V2
Size	: 30x60cm
Thickness	: 8.7mm
Pieces Per Carton	: 8 pieces
Cartons Per Pallet	: 40 cartons
Pallets Per 20'FCL	: 18 pallets
Average Weight Per Carton	: 27.76 kg
Average Weight Per Pallet	: 1.135 kg

* Products, colours and tile designs shown here are for illustration purposes.
Please refer to actual tiles for final selection.



Tiles are in multiple faces:



PRODUCT INFORMATION

Product Name	: Ronan
Product Code	: RFRON2
Colour	: Grey
Surface Finish	: Rough / Anti-Slip
Shade Variation	: V2
Size	: 30x60cm
Thickness	: 8.7mm
Pieces Per Carton	: 8 pieces
Cartons Per Pallet	: 40 cartons
Pallets Per 20'FCL	: 18 pallets
Average Weight Per Carton	: 27.76 kg
Average Weight Per Pallet	: 1.135 kg

* Products, colours and tile designs shown here are for illustration purposes.
Please refer to actual tiles for final selection.



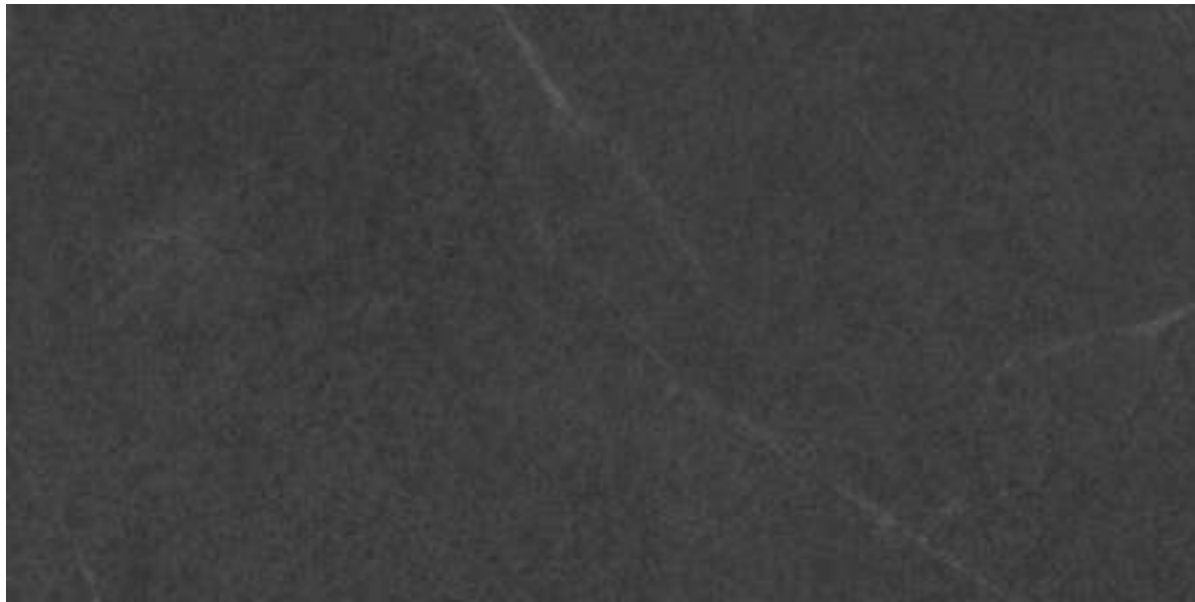
Tiles are in multiple faces:



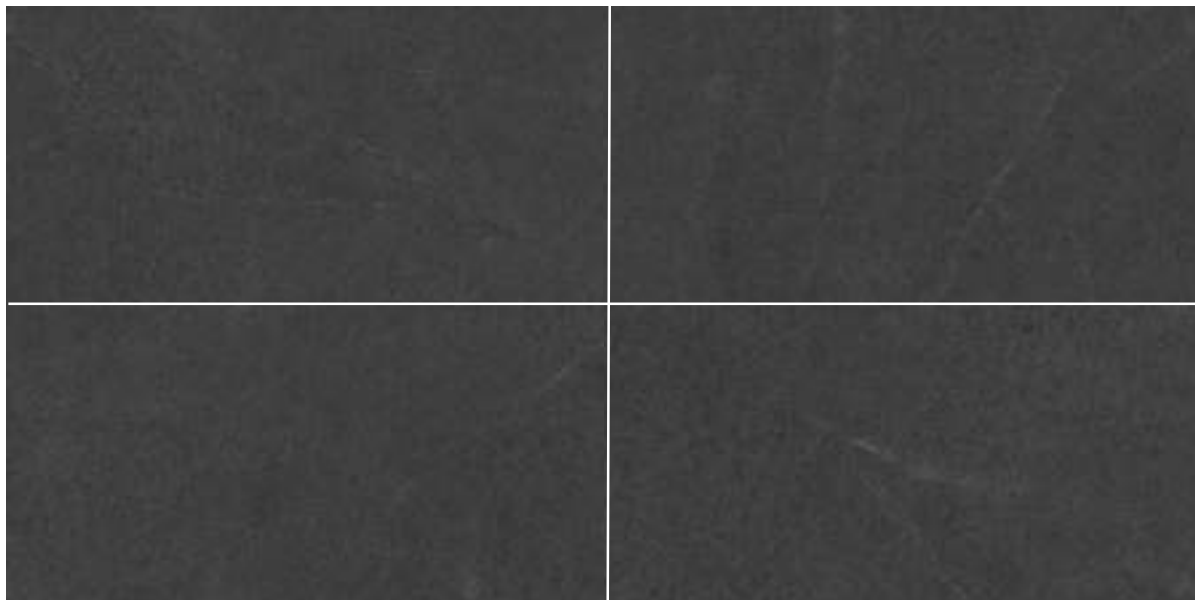
PRODUCT INFORMATION

Product Name	: Ronan
Product Code	: RFRON3
Colour	: Taupe
Surface Finish	: Rough / Anti-Slip
Shade Variation	: V2
Size	: 30x60cm
Thickness	: 8.7mm
Pieces Per Carton	: 8 pieces
Cartons Per Pallet	: 40 cartons
Pallets Per 20'FCL	: 18 pallets
Average Weight Per Carton	: 27.76 kg
Average Weight Per Pallet	: 1.135 kg

* Products, colours and tile designs shown here are for illustration purposes.
Please refer to actual tiles for final selection.




Tiles are in multiple faces:



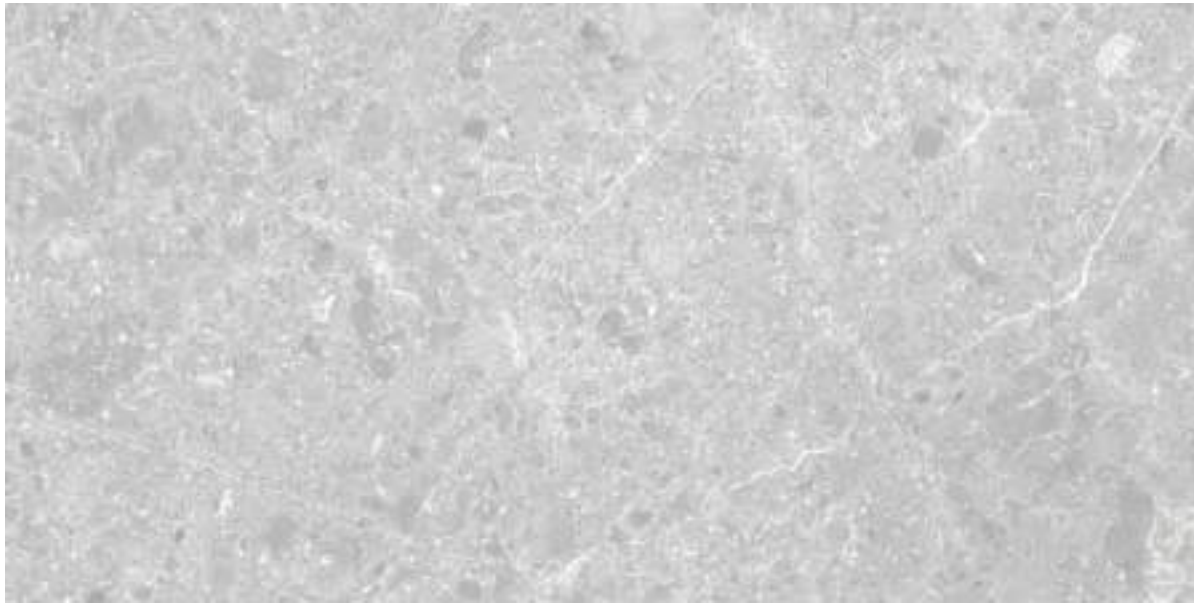
PRODUCT INFORMATION

Product Name	: Ronan
Product Code	: RFRON4
Colour	: Black
Surface Finish	: Rough / Anti-Slip
Shade Variation	: V2
Size	: 30x60cm
Thickness	: 8.7mm
Pieces Per Carton	: 8 pieces
Cartons Per Pallet	: 40 cartons
Pallets Per 20'FCL	: 18 pallets
Average Weight Per Carton	: 27.76 kg
Average Weight Per Pallet	: 1.135 kg

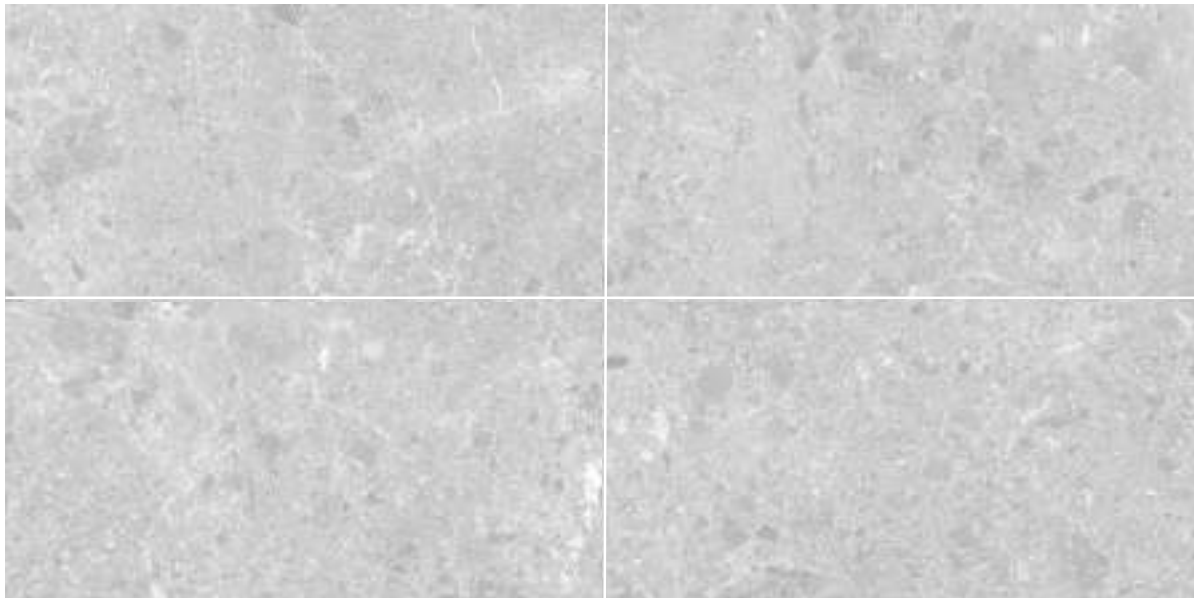
* Products, colours and tile designs shown here are for illustration purposes.
Please refer to actual tiles for final selection.

A black tufted leather chair with a white pillow is positioned against a wall. The wall is split into two sections: a dark, textured wall on the left and a light, textured wall on the right. A white lampshade is visible in the upper right corner.

SPAZIO SASHA
in the Living Room



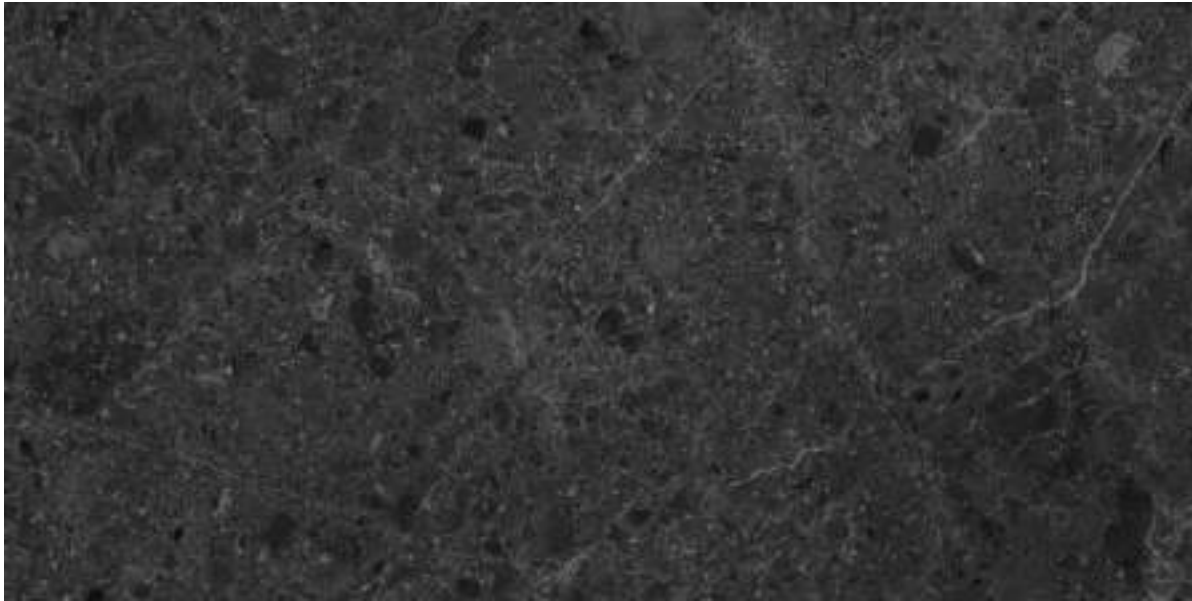
Tiles are in multiple faces:



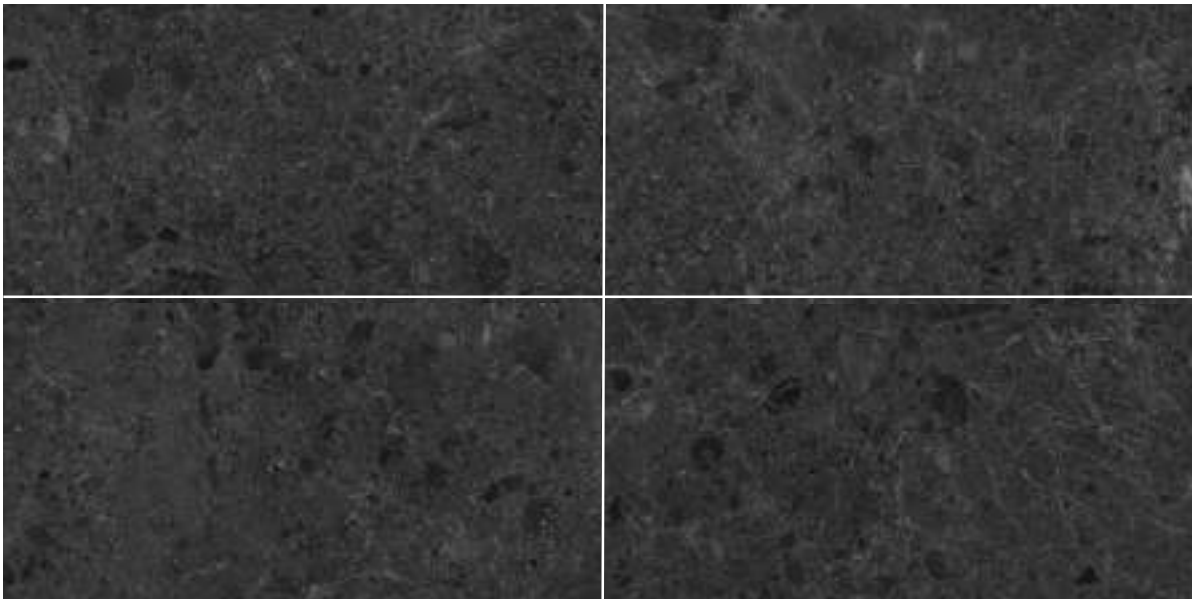
PRODUCT INFORMATION

Product Name	: Sasha
Product Code	: SMSAS1
Colour	: White
Surface Finish	: Matt
Shade Variation	: V2
Size	: 30x60cm
Thickness	: 8.7mm
Pieces Per Carton	: 8 pieces
Cartons Per Pallet	: 40 cartons
Pallets Per 20'FCL	: 18 pallets
Average Weight Per Carton	: 27.76 kg
Average Weight Per Pallet	: 1.135 kg

* Products, colours and tile designs shown here are for illustration purposes.
Please refer to actual tiles for final selection.



Tiles are in multiple faces:



PRODUCT INFORMATION

Product Name	: Sasha
Product Code	: SMSAS2
Colour	: Black
Surface Finish	: Matt
Shade Variation	: V2
Size	: 30x60cm
Thickness	: 8.7mm
Pieces Per Carton	: 8 pieces
Cartons Per Pallet	: 40 cartons
Pallets Per 20'FCL	: 18 pallets
Average Weight Per Carton	: 27.76 kg
Average Weight Per Pallet	: 1.135 kg

* Products, colours and tile designs shown here are for illustration purposes.
Please refer to actual tiles for final selection.

SPAZIO PORCELAIN
TECHNICAL SPECIFICATIONS
E ≤ 0.5% (Bla, ANNEX G)



TECHNICAL FEATURES	STANDARDS	INTERNATIONAL STANDARDS	SPAZIO TYPICAL STANDARDS
DIMENSIONAL CHARACTERISTICS			
Length & Width	ISO 10545-2 / EN 98	±0.60% max±2.0mm	±0.25% max±2.0mm
Thickness	ISO 10545-2 / EN 98	±5.00% max±0.5mm	±5.00% max±0.5mm
Straightness of Sides	ISO 10545-2 / EN 98	±0.50% max±1.5mm	±0.25% max±1.5mm
Rectangularity	ISO 10545-2 / EN 98	±0.50% max±2.0mm	±0.30% max±2.0mm
Surface Flatness	ISO 10545-2 / EN 98	±0.50% max±2.0mm	±0.25% max±2.0mm
CHEMICAL PROPERTIES			
Resistance to Household Chemicals & Swimming Pool Salts	ISO 10545-13 / EN 106	min GB	GB
Resistance to Staining	ISO 10545-14	min Class 3	Class 3
PHYSICAL PROPERTIES			
Water Absorption	ISO 10545-3 / EN 99	Group Bla, E≤0.5%	≤0.5%
Breaking Strength	ISO 10545-4 / EN 100	min 1300 N	1300 N
Modulus of Rupture	ISO 10545-4 / EN 100	min 35 N / mm ²	> 35 N / mm ² (depending on series)
Resistance to Surface Abrasion	ISO 10545-7 / EN 154	Report abrasion class	Glazed: Class 2-4 (depending on glaze type)
Resistance to Deep Abrasion	ISO 10545-6 / EN 102	max 175mm ³	Unglazed: max 150mm ³

The above generic standards for SPAZIO porcelain serves as a general guideline only. Different types of tiles are made to meet different performance requirements. For legal compliance or specific product technical performance, please request a confirmation or report from your MMSB Sales Personnel or Agent.

spazio

PALLET DEALS

For a limited time only

Great
Value

Natural
Designs

MALYSIAN MOSAICS SDN BHD 196401000039 (5371-V)
Lot 8-02, 8th Floor, Menara Hap Seng,
Letter Box No.135, Jalan P. Ramlee,
50250 Kuala Lumpur, Malaysia.

TEL +603 2027 8118

FAX +603 2027 8113

EMAIL mmbcareline@mmosaics.com

 [mmlglobal](#)

 [mmlglobal](#)

 [mmlglobal](#)

 www.mymml.com