



AUSTIN



QUALITY. GUARANTEED.



A dynamic stone look  
with subtle white to strong grey  
contrasting veins to add  
visual impact to suit your liking.

# AUSTIN



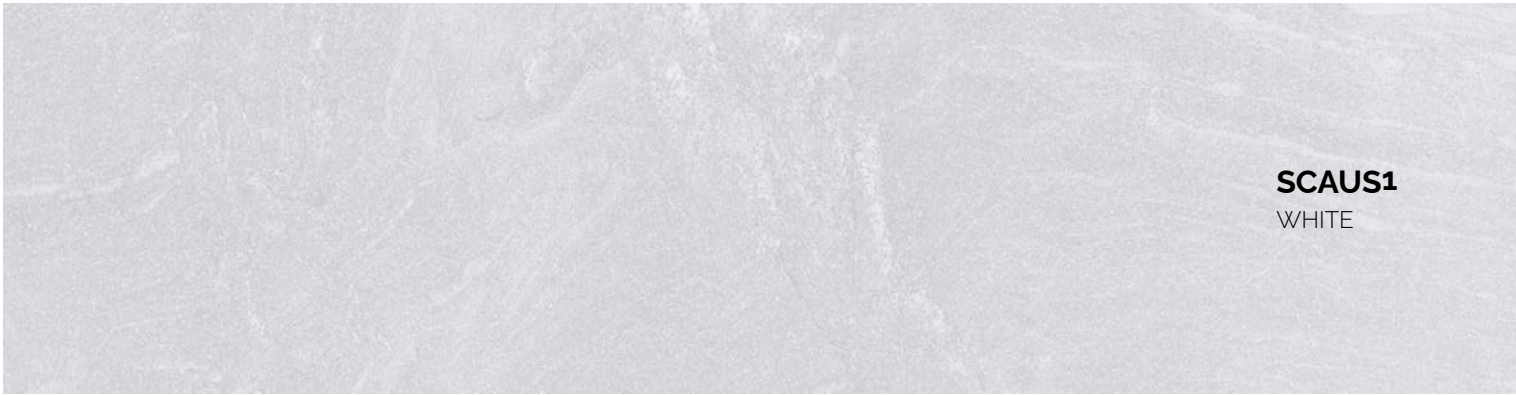


# AUSTIN

COLORS



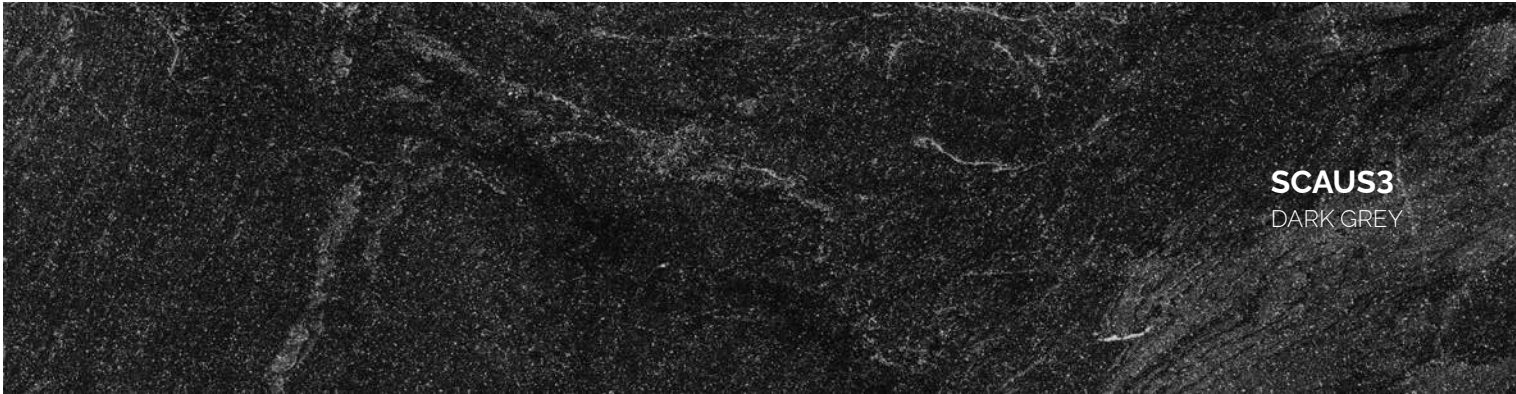
WALL&FLOOR: LIGHT GREY **SCAUS2** 60x60cm / 24"x24"



**SCAUS1**  
WHITE



**SCAUS2**  
LIGHT GREY



**SCAUS3**  
DARK GREY









WALL&FLOOR: DARK GREY **SCAUS3** 60x60cm / 24"x24"

FLOOR: LIGHT GREY **SCAUS2** 60x60cm / 24"x24"

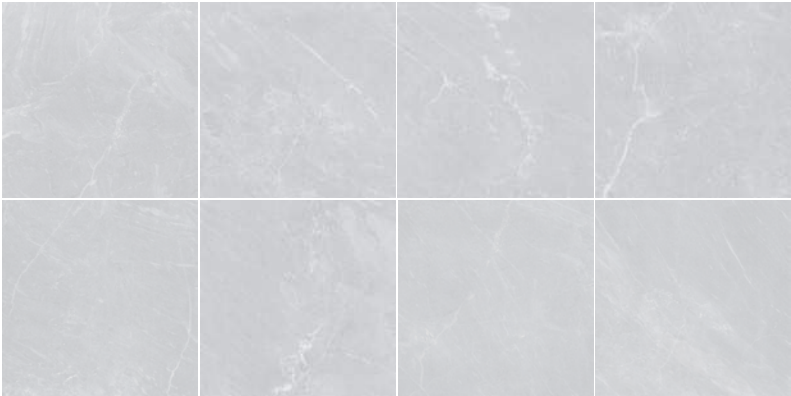


AUSTIN

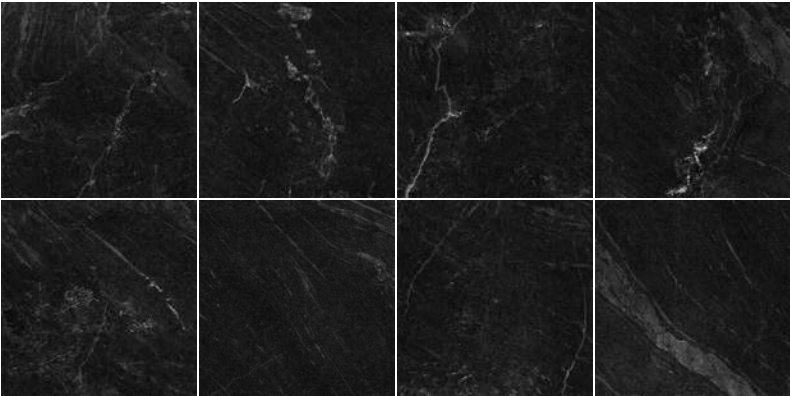
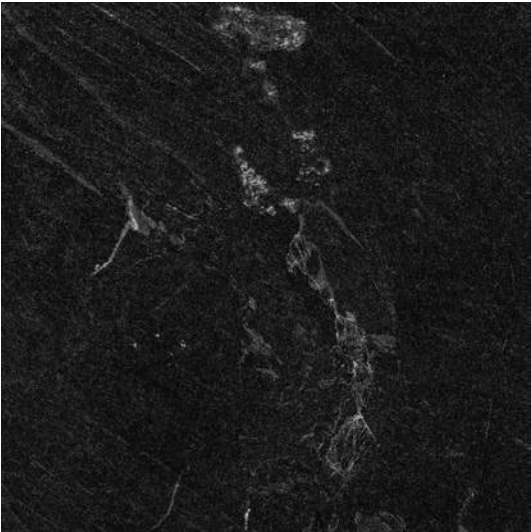
Product Information

V2  
Rectified  
Eco MML  
Flat

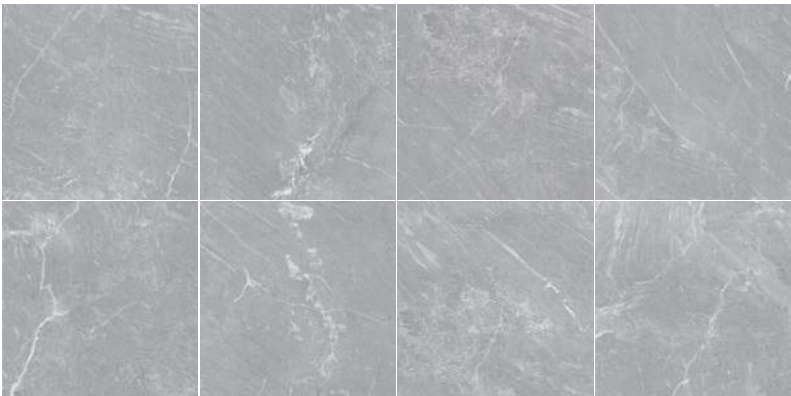
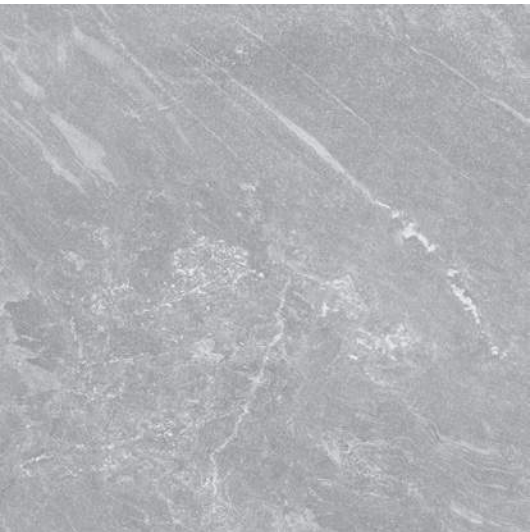
SCAUS1 / WHITE



SCAUS3 / DARK GREY



SCAUS2 / LIGHT GREY



CRYSTAL  
MATT  
60x60cm  
24"x24"  
8 Faces

CRYSTAL  
MATT  
30x60cm  
12"x24"  
12 Faces

-  Floor
-  Wall
-  Outdoor
-  Indoor

\* Colors and tile designs shown above are for illustration purposes. Please refer to actual tiles for final selection.

# TECHNICAL SPECIFICATION

E ≤ 0.5% ( Bla, ANNEX G )


| TECHNICAL FEATURES                                      | STANDARDS    | INTERNATIONAL STANDARDS | MML TYPICAL STANDARDS                          |
|---|--------------|-------------------------|--|
| DIMENSIONAL CHARACTERISTICS                             |              |                         |  |
| Length & Width  | ISO 10545-2  | ± 0.60%<br>max ± 2.0mm  | ± 0.25%<br>max ± 2.0mm                         |
| Thickness   | ISO 10545-2  | ± 5.00%<br>max ± 0.5mm  | ± 5.00%<br>max ± 0.5mm                         |
| Straightness of Sides                                   | ISO 10545-2  | ± 0.50%<br>max ± 1.5mm  | ± 0.25%<br>max ± 1.5mm                         |
| Rectangularity  | ISO 10545-2  | ± 0.50%<br>max ± 2.0mm  | ± 0.30%<br>max ± 2.0mm                         |
| Surface Flatness  | ISO 10545-2  | ± 0.50%<br>max ± 2.0mm  | ± 0.25%<br>max ± 2.0mm                         |
| CHEMICAL PROPERTIES                                     |              |                         |  |
| Resistance to Household Chemicals & Swimming Pool Salts | ISO 10545-13 | Min GB                  | GB   |
| Resistance to Staining                                  | ISO 10545-14 | Min Class 3             | Class 3  |
| PHYSICAL PROPERTIES                                     |              |                         |  |
| Water Absorption  | ISO 10545-3  | Group Bla, E ≤ 0.5%     | ≤ 0.5%   |
| Breaking Strength                                       | ISO 10545-4  | Min 1300 N              | 1300 N   |
| Modulus of Rupture                                      | ISO 10545-4  | Min 35 N / mm²          | > 35 N / mm²<br>(Depending on Series)          |
| Resistance to Surface Abrasion                          | ISO 10545-7  | Report Abrasion Class   | Glazed: Class 2-4<br>(Depending on Glaze Type) |


The above information serves as a general guideline only. Different types of tiles are made to meet different performance requirements. For legal compliance or for specific product technical performance, please request for a confirmation or test report.




QUALITY. GUARANTEED.

## FOLLOW US ON:

 [mymml.com](http://mymml.com)

 [mmlglobal](#)

 [mmlglobal](#)

